



FRP-X High Flow Cartridge Housing

Products Features:

- Suitable for high flow cartridge filters
- Easy installation, quick change-out without dismantling pipeline
- Ultra-high strength of corrosion resistance, perfect option for sea water
- Modular design, smaller footprint, compact and mobile.
- Beautifully matched with FRP membrane vessels
- Matched with Max-A (Pall Ultipleat equivalent) or Max-T (Pentair Aqualine equivalent)
- Clamp opening better avoiding housing handle end cap "sucked in" problem
- Sealed clamp end design reduces the risk of leakage



Applications:

- Prefiltration for RO
- Oil & Gas
- Desalination
- Petrochemicals
- Food & Beverage
- Pulp & Paper

Technical Data

Material of constructions
Shell FRP

Design pressure
150psi (standard)

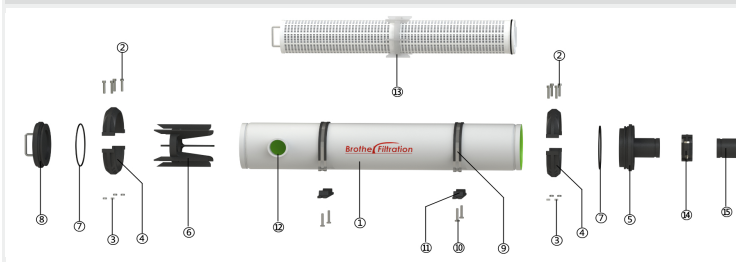
Connections
Standard inlet/outlet 3" couplings

FRP HOUSING CLAMP TYPE BENEFIT OVER NORMAL TYPE

	Quick Open Type	Normal Type
Opening Type	More quicker Clamp opening- 10s opens	locking segment + Screw
Design pressure	10bar	10bar
Handle	Humanized design	Humanized design
Cost	Clamp type Save 30% than normal type as products size and structure optimization	

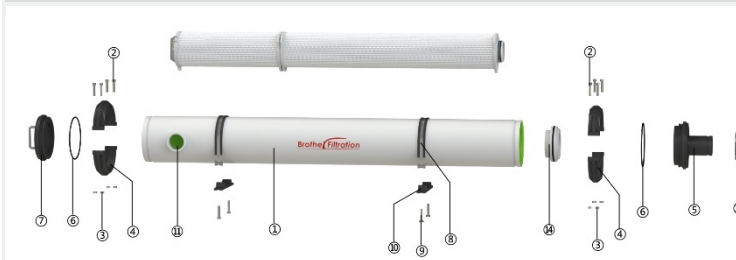
Accessories:

Max-A Series High Flow



- 1: Vessel Shell
- 2: Bolt
- 3: Nut
- 4: Clamp
- 5: Inlet end cap
- 6: Thrust ring
- 7: Seal oring
- 8: End cap
- 9: Strap
- 10: Strap screw
- 11: Saddle
- 12: Side port
- 13: Guiding ring
- 14: DN 80 Coupling
- 15: DN 80 Short pipe

Max-T Series High Flow



- 1: Vessel Shell
- 2: Bolt
- 3: Nut
- 4: Clamp
- 5: Outlet end cap
- 6: Seal oring
- 7: End cap
- 8: Strap
- 9: Strap screw
- 10: Saddle
- 11: Side port
- 12: DN 80 Coupling
- 13: DN 80 Short pipe
- 14: Connection part

Ordering Information:

MFx	-A	-40	-S	-10	-N
Model	Series	Length	Connection	Design Pressure	Side Port Material
FRP-X High Flow Cartridge Housing	A=Max-A Series High Flow T=Max-T Series High Flow	20=20inch (508mm) 40=40inch (1016mm) 60=60inch (1524mm)	S=Side Port	10=10bar	N=Nylon 316=SS316L 2205=Duplex2205 2507=Duplex2507